

- Overview
- Quantitative Analysis
- Holdings
- Price & Charts
- News & Research
- Events
- Ownership
- 360 Menu
- ...

FUND OVERVIEW

Fund Data for Investment Professionals

LIPPER ON EIKON

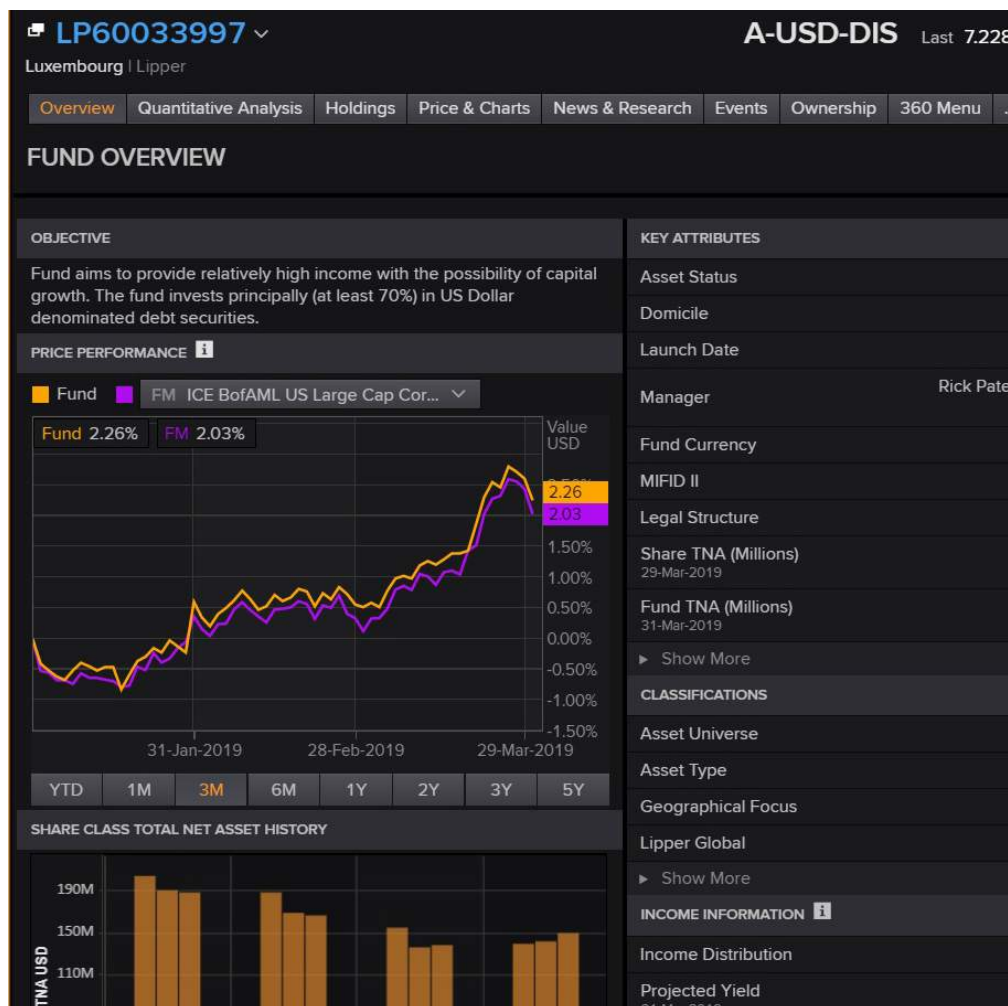
KEY ATTRIBUTES	
Asset Status	Active
Domicile	Luxembourg
Launch Date	12-Nov-1990
Manager	Rick Patel, Ario Emami Nejad, Rosie McMellin
Fund Currency	US Dollar
MIFID II	Yes
Legal Structure	LU - SICAV - Part 1
Share TNA (Millions) 29-Mar-2019	147.78 USD
Fund TNA (Millions) 31-Mar-2019	1,073.26 USD
▶ Show More	
CLASSIFICATIONS	
Asset Universe	Mutual Funds
Asset Type	Bond
Geographical Focus	United States of America
Lipper Global	Bond USD
▶ Show More	
INCOME INFORMATION ⓘ	
Income Distribution	Paid, Reinvested
Projected Yield 31-Mar-2019	1.67%
Payment Date	08-Feb-2019

FUND RATINGS		
Lipper Leaders		
3 Years		
3	3	
Total Return	Consistent Return	
Highest – 5 -		
FEES AND INVESTMENTS		
Charges %		
Initial		
Annual		
Redemption		
Total Expense Ratio		
▶ Show More		
PERFORMANCE ⓘ		
	Fund	FM
1M	2.04%	2.11%
3M	3.30%	3.22%
5Y	4.83%	4.83%
YTD	3.30%	3.22%
1Y	4.83%	4.57%
3Y	1.88%	2.00%

31-Jan-2019 28-Feb-2019 29-Mar-2019

YTD 1M 3M 6M 1Y 2Y 3Y 5Y





Contents

Lipper on Eikon enhances productivity	3
Lipper provides transparent and reliable data and content	4
Lipper Fund Data and Eikon	
A powerful combination	5
Dashboard Views	
Open- and closed-end fund overviews	6
Fund Views	
Quantitative analysis	8
Summary holdings	9
Full holdings	10
Global Fund Flows	
Fund flows and TNA data	11
Fund Routines	
Customizable views	12
Eikon Functionality	
Fact sheets and workflow tools	13
Fund Screener	14
Fund report templates in Fund Screener	15
Resources and Contact	
Access Lipper Fund data on Eikon	16

Lipper on Eikon enhances productivity

The financial world is increasingly complex, and professionals across the spectrum who work with funds – whether open-end investment funds or exchange traded funds (ETFs) and other closed-end investments – have turned to Lipper as the trusted provider of fund data, independent research and evaluation tools for decades.

Now, the Lipper fund data and tools that help professionals transform ideas into action, manage risk, and market funds are available via Eikon, Refinitiv's financial platform. Eikon enhances Lipper fund data with its clear, customizable displays and intuitive navigation – all of which make workflow more efficient for financial professionals.

Lipper fund data on Eikon supports a variety of financial professionals.

Asset Managers

Leverage our research and tailored actionable intelligence to help identify the most attractive funds, fund-of-funds, and top-performing managers.

Wealth Advisors

Lipper fund research data and thought leadership support investment discussions and fund selection.

Private Bankers

Lipper fund research and analytics enable assessment of investment opportunities and decision making.

Sell-Side Professionals

Global fund flows allow you to monitor and report on market trends, make meaningful fund comparisons and define positioning strategies in the most competitive way possible.

Traders

Data and analytics on ETFs and other closed-end funds help drive the most efficient trades possible.

Lipper provides transparent and reliable data and content

Lipper fund data is renowned in the industry for its quality, integrity, breadth and depth. Data transparency and objectivity are supported by Lipper's fund classification methodology, which is continually reviewed to ensure that it strikes an even balance of consistency and flexibility in an evolving industry.

- Comprehensive data on more than 280,000 collective investments in 63 countries
- Over 400 homogenous groups of funds that provide the ability to compare like-for-like fund mandates
- Unmatched granularity, including finely calibrated performance and risk statistics that offer a complete picture of a fund
- A choice of style-based holdings classifications, proprietary fund association local market schemes or Lipper's Global Classification of all funds
- Clearly defined methodology and finely tuned classification system Eikon provides vast Lipper data

FUND PROFILE DATA	MARKET DATA (ETF AND CLOSEDEND FUNDS ONLY)	HOLDINGS DATA	PRICE/PERFORMANCE/TIME SERIES
<ul style="list-style-type: none"> • Benchmarks • Classifications • Company information • Currency • Domicile • EU tax directive • Fees and investments • Fund attributes • Fund manager • Fund ratings • Geographical focus • Income information • Investment objective • Legal structure 	<ul style="list-style-type: none"> • 52-week range • Bid-ask spread • Intraday pricing and volume • Quote histories • Real-time pricing 	<ul style="list-style-type: none"> • Daily creation baskets (ETFs) • Daily redemption baskets (ETFs) • Daily tracking baskets (ETFs) • Historical holdings (EIKON Portfolio Analytics) • Latest full holdings • Top 10 holdings 	<ul style="list-style-type: none"> • Annualized standard deviation • Beta • Correlation • Dividends • Fund flows data • Indexed performance • Information ratio • Jensen alpha • Maximum drawdown • Performance • Price • Risk/return ratio • R-squared • Sharpe ratio • Single sum • Total net asset histories • Tracking error • Treynor ratio

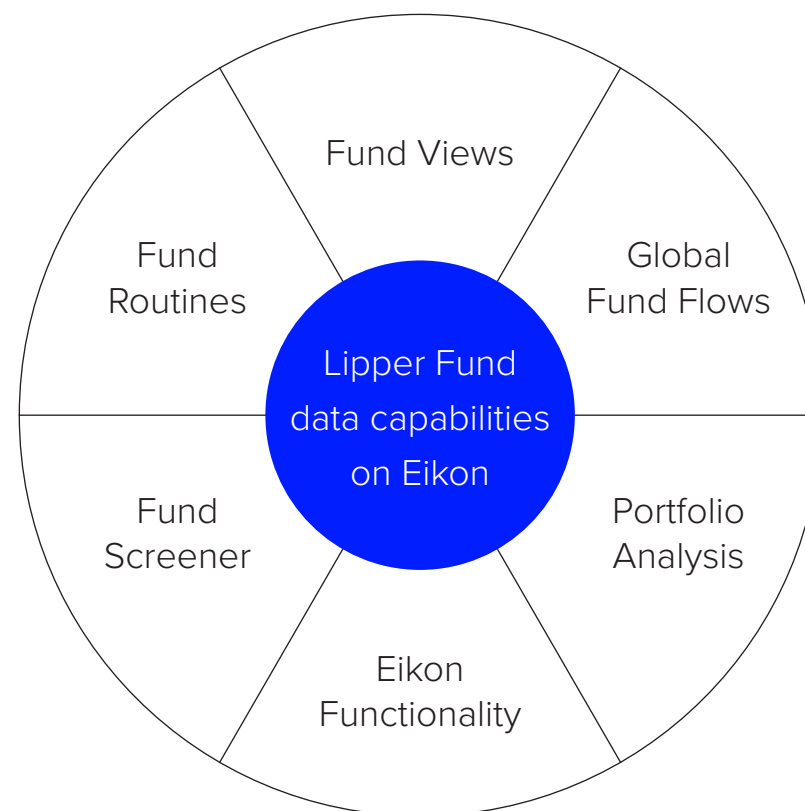
Lipper Fund data and Eikon: a powerful combination

Eikon provides access to the industry's most-trusted financial intelligence in a single integrated platform – with an elegant and intuitive interface and mobile compatibility.

By using Eikon to access Lipper Fund data, you'll gain our Lipper Fund data capabilities, combined with information, analytics, and exclusive news on the financial markets.

Eikon keeps you informed, connected and empowered

- Better market access
- The most precise analysis, ratings, and benchmarking tools
- A single efficient workspace
- Virtually unrivaled universe of financial content and applications
- Integrated workflow and analytics solutions
- Efficient charting and reporting tools



Dashboard Views: open- and closed-end fund overviews

ACCESS THE MOST RELEVANT FUND DATA AT A GLANCE

Eikon does not use a one-size-fits-all approach to its fund overview dashboards — instead enabling you to access two versions of the fund overview that display the relevant companies for open- and closed-end funds.

- Expertly assembled with the most frequently needed information
- Unnecessary and irrelevant components eliminated
- Offers intuitive Eikon navigation
- Embedded tools and interactive visualizations across multiple views

Fund overviews for open-end investment funds

Comprehensive and timely global coverage, including:

- Price performance
- Total net asset value history
- Key attributes
- Classification
- Income information
- Top 10 holdings
- Fund ratings
- Fees and investments
- Performance
- Benchmarks

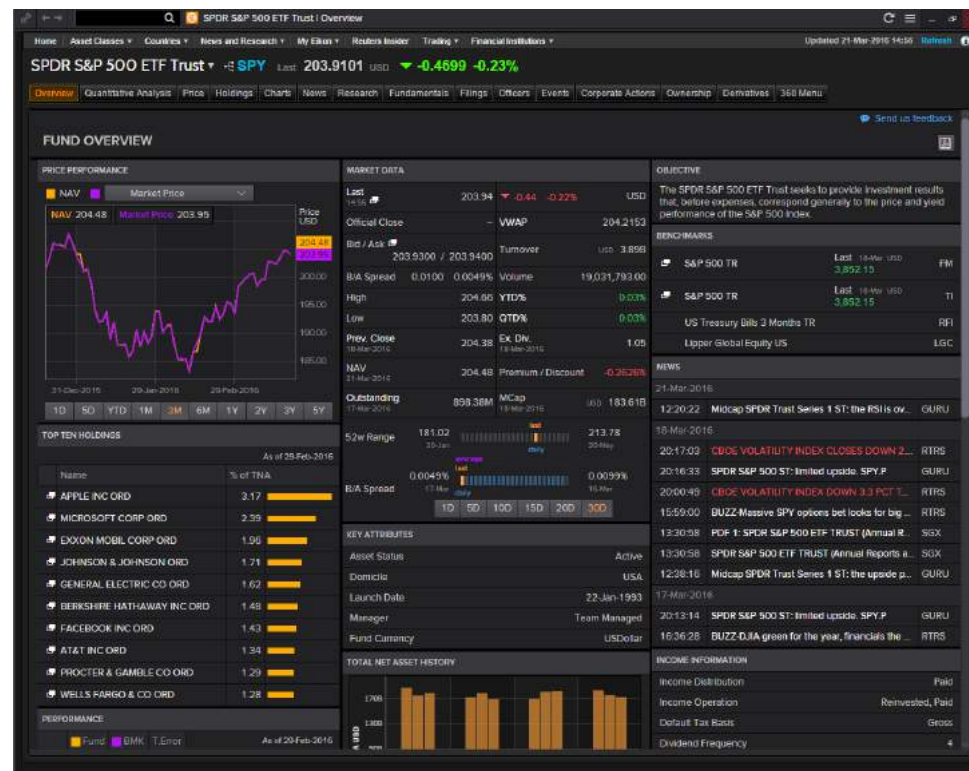


Dashboard Views: continued

Fund overviews for ETFs and other closed-end funds

View real-time market data for ETF and closed end funds, including:

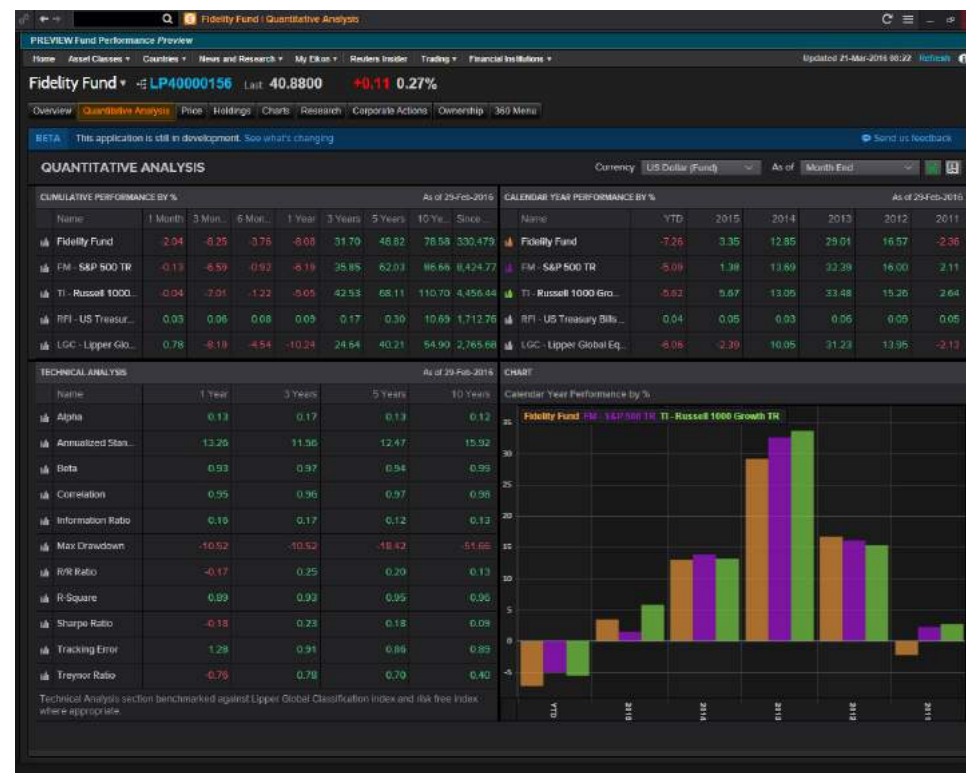
- 52-week range
- Bid-ask spread
- Intraday pricing and volume
- Quote histories
- Real-time pricing



Fund Views: quantitative analysis

Quickly access and assess fund performance and risk statistics

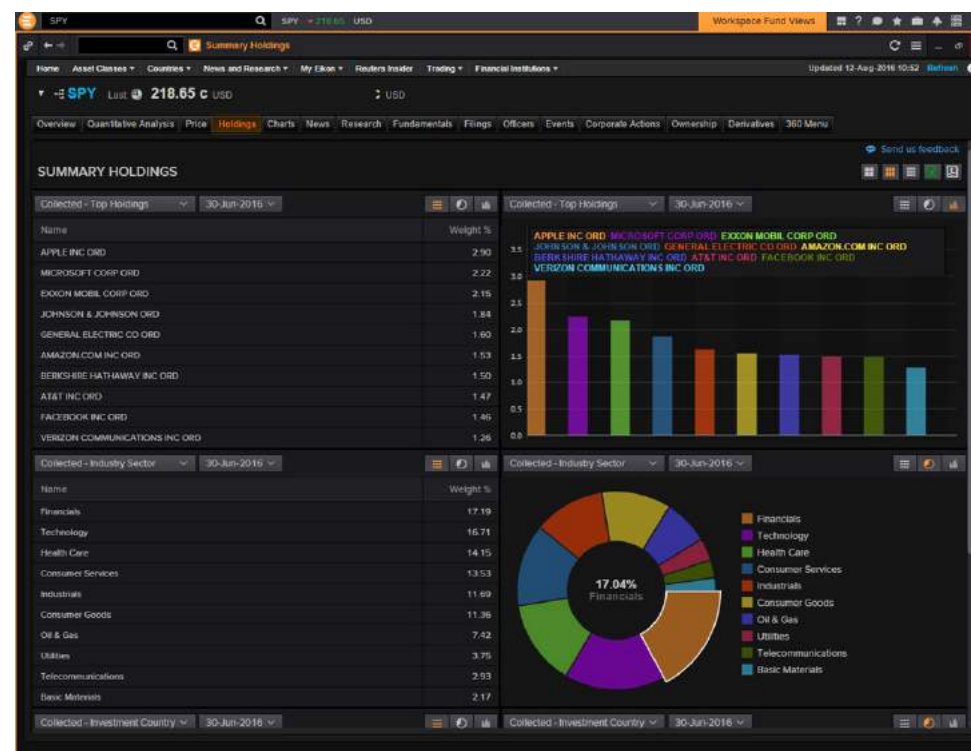
- Measure against assigned benchmarks and Lipper Global Classifications
- Currency controls easily convert to the currency where the fund is registered for sale
- Adjust time periods to relate to calculation data — month-end, latest Friday and latest
- Export data to MS Excel®
- Customizable interactive charting displays performance or technical analysis components



Fund Views: summary holdings

Assess the top 10 holdings data historically

- View top 10 holdings data for one year
- Review multiple component breakdowns and time periods simultaneously
- Export data to MS Excel



Fund Views: full holdings

Analyze the latest complete holdings of any fund

- View includes links to quote lists and company overviews for individual stocks
- Access data for the latest weight/percentage of total net assets, number of shares held and the change in shares since last reporting
- Add securities to Eikon Monitor for more real-time data analysis
- Comprehensively assess the latest stocks within a fund
- Easily export information to MS Excel

SPDR S&P 500 ETF Trust | Full Holdings

Updated 08-Sep-2016 08:41

Overview | Quantitative Analysis | Prices | Holdings | Charts | News | Research | Fundamentals | Filings | Officers | Events | Corporate Actions | Ownership | Datafeeds | 360 Menu

As of 31-Jul-2016

RIC	Name	Country	Weight %	No. Shares	Change
AAPL.OQ	APPLE INC ORD	UNITED STATES	3.017	57,601,939	3,266,240
MSFT.OQ	MICROSOFT CORP ORD	UNITED STATES	2.355	82,666,956	4,686,815
XOM.N	EXXON MOBIL CORP ORD	UNITED STATES	1.950	43,611,020	2,472,704
JNJ.N	JOHNSON & JOHNSON ORD	UNITED STATES	1.821	28,928,496	1,639,874
AMZN.OQ	AMAZON.COM INC ORD	UNITED STATES	1.522	4,069,542	221,038
FB.OQ	FACEBOOK INC ORD	UNITED STATES	1.515	24,916,586	1,370,802
GE.N	GENERAL ELECTRIC CO ORD	UNITED STATES	1.514	86,701,303	5,683,296
BRK.B	BERKSHIRE HATHAWAY INC ORD	UNITED STATES	1.429	19,708,337	1,117,730
T.N	AT&T INC ORD	UNITED STATES	1.409	64,740,194	3,070,329
JPM.N	JPMORGAN CHASE & CO ORD	UNITED STATES	1.237	38,465,592	2,180,650
GOOGL.OQ	ALPHABET INC ORD	UNITED STATES	1.229	3,088,696	176,084
PG.N	PROCTER & GAMBLE CO ORD	UNITED STATES	1.205	27,590,464	1,587,038
GOOGL	ALPHABET INC ORD	UNITED STATES	1.200	3,106,246	176,120
VZ.N	VERIZON COMMUNICATIONS INC ORD	UNITED STATES	1.194	42,871,898	2,430,342
PFE.N	PFIZER INC ORD	UNITED STATES	1.183	63,787,924	3,616,448
WFC.N	WELLS FARGO & CO ORD	UNITED STATES	1.172	48,591,274	2,754,610
CVX.N	CHEVRON CORP ORD	UNITED STATES	1.021	19,822,787	1,123,846
HD.N	HOME DEPOT INC ORD	UNITED STATES	0.909	13,081,424	741,776
KO.N	COCA-COLA CO ORD	UNITED STATES	0.898	40,049,900	3,321,582
INTC.OQ	INTEL CORP ORD	UNITED STATES	0.870	49,682,657	2,815,620
CMCSA.OQ	COMCAST CORP ORD	UNITED STATES	0.860	25,427,184	1,441,998
MRK.N	MERCK & CO INC ORD	UNITED STATES	0.858	28,111,446	1,650,234
PEP.N	PEPSICO INC ORD	UNITED STATES	0.832	15,191,005	860,310
PM.N	PHILIP MORRIS INTERNATIONAL INC ORD	UNITED STATES	0.822	16,315,519	926,034
CSCO.OQ	CISCO SYSTEMS INC ORD	UNITED STATES	0.812	52,898,938	2,998,992

Global Fund Flows: fund flows and total net assets data

Sell-side research professionals gain effective insight

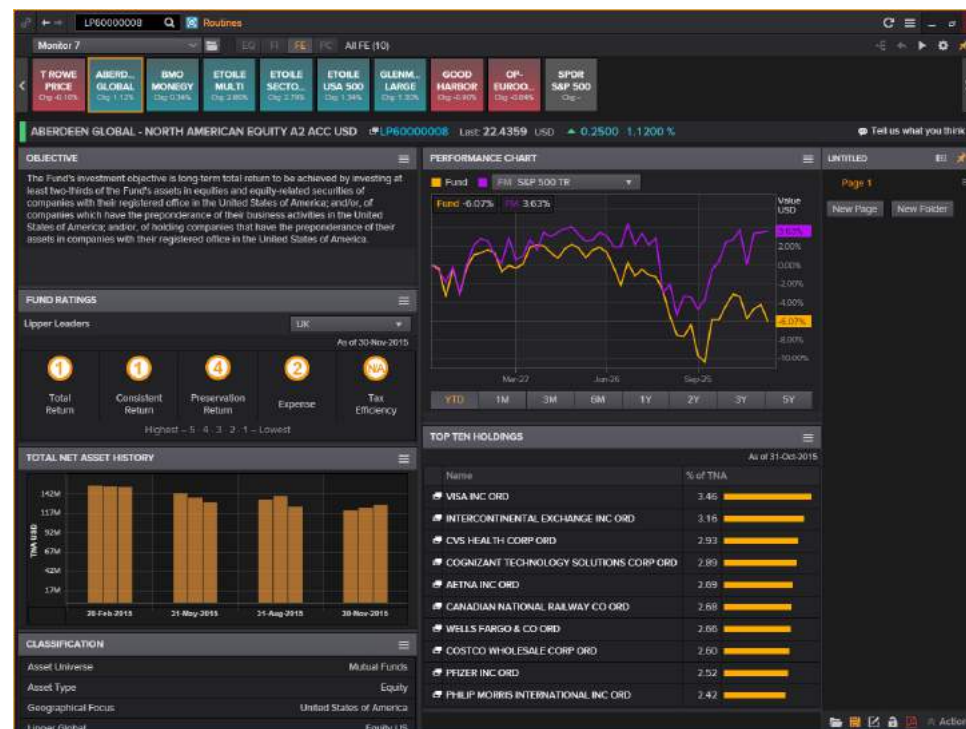
- Track global fund flows, historical flows and total net assets (TNA) data
- Navigate easily
- View estimated net sales: track the asset flows of open-end investment funds due to sales and redemptions, on a period-to-period basis
- Gain access to:
 - Geographical aggregations by fund domicile over one-day, one-week, one-month and one-year
 - Geographical aggregations with an overlay of asset type
 - Lipper Global Classification based aggregations
- Easily produce and schedule



Fund Routines: customizable views

Wealth advisors and private bankers can streamline workflows and increase productivity

- Flexibly automate repetitive tasks
- Access our library of sample and preset Eikon routines for funds and ETFs
- Customize and build your own routines to access all of your fund content
- Generate Adobe PDFs

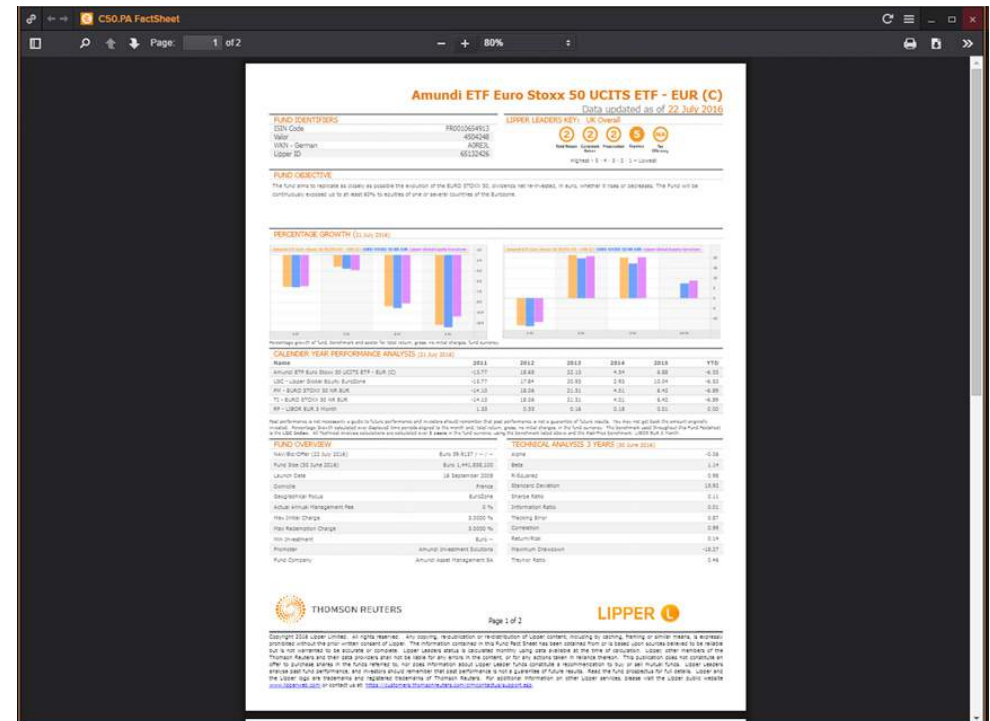


Eikon Functionality: fact sheets and workflow tools

Eikon enables you to create fact sheets, build charts and integrate with MS Excel

Eikon is renowned for its reporting and charting functionality, which facilitates communication with investors, regulators and third-party partners.

- Fund fact sheets: choose from two new preformatted fact sheets for fund overview and asset allocation – easily created via an icon in the fund overview, quantitative analysis and holdings views
- MS Excel integration: Eikon enables fund data to be easily exported to MS Excel for integration with your proprietary data and other intelligence
- Charting: a selection of innovative Eikon charting capabilities let you turn sophisticated fund data and statistics into visually appealing charts to use in presentations and reports



Eikon Functionality: Fund Screener

Customizable search across the Lipper database

- Flexibly define the competitive universe you want to review
- Choose from over 330 data points
- View static data, Lipper classifications and value-based information
- Save searches for future analysis
- Create user default searches
- Conduct basic static fund and index searches
- Perform sophisticated fund comparisons using a variety of criteria

The screenshot displays the Eikon Fund Screener interface. At the top, there's a navigation bar with 'Home', 'Asset Classes', 'Countries', 'News and Research', 'My Eikon', 'Reuters Insider', 'Trading', and 'Financial Institutions'. The main header reads 'FUND SCREENER' and indicates 'There are 632498 funds in the universe. Specify your criteria to narrow the universe of funds.' Below this, there are options to 'Save Screen' (set to '<Custom>'), 'Save Screen', 'Set as Default', and 'Clear Form'. The screen results are based on criteria: 'Attributes = Countries Registered for Sale: Any', 'Classification Schemes = Lipper Global: Equity Global', 'Fund: Primary fund, Active', and 'Asset Universe: Mutual Funds'. The performance is set to 'Calendar Year' and the currency is 'UK Pound Sterling'. The table shows 101 records out of 4508, as of June Month End. The table columns include 'Name', 'Percentage Growth Year To Date', and performance for the years 2015, 2014, 2013, 2012, and 2011. The data is as follows:

Name	Percentage Growth Year To Date	2015	2014	2013	2012	2011
Active Timing - Quantis CHF in lit	7.611	(1.975)	(2.416)	—	—	—
Advantax International Sharesmarket	8.023	5.027	3.911	22.360	11.635	(11.307)
Advantax International Shares Core	8.998	4.850	3.859	21.920	13.545	(8.501)
Advantax International Shares Multi-Blend	8.684	3.099	9.459	20.959	7.780	(8.280)
Advantax Wholesale Global Alpha	10.284	(7.611)	(9.889)	(11.176)	2.112	2.000
Advantax Wholesale High Growth Multi-Blend	12.442	(1.823)	4.337	3.589	11.566	(8.608)
Advantax Wholesale International Shares Multi-Blend	9.235	4.134	10.549	22.220	9.107	(5.284)
Advantage Global Equity Volatility Focused-MYRH	18.798	—	—	—	—	—
Advantage Stock	7.238	9.171	7.911	20.063	4.282	(12.968)
Advisor Fds - Abrech & Cie. Opilselet Fonds P	7.373	0.787	(8.388)	14.672	1.305	(12.302)
Advisor Global	9.146	0.575	10.484	18.294	9.267	(11.899)
AdvisorOne CLS Global Aggressive Equity Fund,N	10.683	3.171	9.753	24.561	9.685	(5.289)
Advisory Research Global Value Fund	7.378	2.142	4.406	24.548	11.184	(7.588)
AESM World Equity Fund (EUR)	11.523	(3.881)	—	—	—	—
AEGON Climate Change Rescovery ba	12.928	1.403	8.662	25.884	6.455	(28.953)
AEGON Diversified Equity Fund	13.984	—	—	—	—	—
AEGON Duurzaam index Aandelen Fonds	9.171	1.767	7.976	19.607	11.887	(7.988)
AEGON Hemelkooz Rescovery ba A	10.287	(8.639)	4.892	18.947	8.239	(17.110)
AEGON Wereld Index Aandelen Fonds	12.147	3.398	10.211	20.423	11.681	(8.582)
AEGON World Equity Index Fund (EUR)	12.241	(1.888)	2.915	25.533	—	—
AFA GLOBAL WERTE STABILISIERUNGS-FONDS	12.387	0.680	(1.341)	23.228	(10.360)	—
Aller Actions Monde	9.511	2.415	5.581	7.238	8.270	(9.910)
Allin Hwang Global Equity SGD	9.187	—	—	—	—	—
African Alliance SICAV Global Equity I	7.217	—	—	—	—	—

Eikon Functionality: fund report templates in Fund Screener

Gain a complete picture of a fund to identify investment opportunities

- Use a series of predefined templates to screen funds for performance, Lipper Leaders ratings, risk, fees and asset overview details
- Create custom templates using more than 240 data points
- Generate fund overviews
- Access quote lists
- Export results to MS Excel

The screenshot displays the Eikon Fund Screener interface. A 'Manage Columns' dialog box is open, allowing users to customize the data points shown in the fund report. The dialog is divided into two main sections: 'Predefined Templates' and 'Selected Columns'. The 'Predefined Templates' section lists various categories such as Asset Universe, Attributes, Benchmarks, Classification Schemes, Company Information, Fees, Financials, Fund, Lipper Leaders, and Performance Statistics. The 'Selected Columns' section shows a list of columns that have been chosen for the report, including 'Percentage Growth Year To Date', 'List Year', 'Current Year minus two', 'Current Year minus three', 'Current Year minus four', and 'Current Year minus five'. The background of the screenshot shows a list of funds with columns for Name, Assets, and various performance metrics.

Name	Assets	Performance	Other Metrics
Amundi Alpha 2018	14,487	11.1%	3,280
Amundi Alpha 2020	15,091	11.2%	3,280
Amundi Alpha 2020	15,930	11.3%	3,280
Amundi Alpha 2018	12,890	11.4%	1,157
Amundi Alpha 2018	15,930	11.5%	3,280
Amundi Alpha 2018	16,179	11.6%	3,280
Amundi Alpha 2018	18,179	11.7%	3,280
Amundi Alpha 2018	19,179	11.8%	3,280
Amundi Alpha 2018	20,179	11.9%	3,280

Resources and Contact

Access Lipper fund data on Eikon


The world's most trusted source of fund performance data is available on our pre-eminent desktop solution.

Access Lipper fund data on Eikon to make your workflow more efficient.

For additional information on Eikon, click [here](#).

EIKON SUPPORT

United States and Canada: 1-888-888-1082

For other regional numbers, go to  > Help > Contact Us.

You can contact RefinitivCustomer Support anytime using Eikon Messenger.

Click on the toolbar to open Messenger.

Then click Customer Support in the Ungrouped category of contacts and type your message.

Visit refinitiv.com/eikon