



>> USER GUIDE
VERSION 1.0

SEASONALITY CHART

How to use the Seasonality Chart app
to make seasonal analysis for any market

Visit refinitiv.com

 @Refinitiv

 Refinitiv

REFINITIV[®]

DATA IS JUST
THE BEGINNING[®]



Getting started

Seasonality Chart lets you make seasonal analysis for any market using variables such as trends, averages and deviation. The app covers a broad range of instruments including commodity futures, commodity exchanges, traded calendar and product spreads, futures, equities and foreign exchange.



To launch Seasonality Chart, type **SEAC** into the search bar and press **enter**.

Select an instrument The app opens with your active symbol. Type in a known code or search using natural language and select from autosuggest. For futures, select the contract month.

Change chart mode Toggle between standard and multi-leg spread modes.

Switch view Use the toolbar to switch between chart, data table and heatmap.



Choose years for analysis Select a year to add/remove it from the chart. Years added to the chart are highlighted in blue.

Select a focus Choose a field for analysis from the dropdown menu.

History data Drag and drop the slider to change the date range for future contracts.

Multi-leg spreads

There are two modes in Seasonality Chart: standard and multi-leg spread. Standard mode shows you a default seasonal view of an instrument, as shown on the previous page. Multi-leg spread mode shows you multiple instruments plotted in legs with corresponding ratios.



Switching modes

When you switch to multi-leg spread mode from standard mode, the system will try to find any predefined spread that has the same root code in leg 1 as the instrument in standard mode. When you switch to standard mode from multi-leg spread mode, it will open with the instrument from leg 1.

The screenshot displays the 'VIEW MODE' panel on the left and the 'SEASONALITY CHART' main area on the right. The 'VIEW MODE' panel includes:

- Select mode:** Radio buttons for 'Standard' and 'Multi-Leg Spread' (selected).
- Select spread type:** A dropdown menu set to 'Custom' with an 'Edit' button.
- AVAILABLE YEARS:** A grid of years from 2024 to 2006, with 2019-2020 highlighted.
- From/To:** Date and time selection fields (e.g., May 23 -1 and May 22 0).
- ANALYSIS OPTIONS:** Checkboxes for 'Show Historical Average', 'Show High/Low Bands', and 'Hide Historical Data'.

The main chart area shows a grid of 12 legs (Leg1 to Leg12) with input fields for instrument codes and ratios. Leg1 is pre-filled with 'CLJ2' and a ratio of '-1'. Other legs have 'Insert Value' or 'Ratio' labels. A warning message at the bottom reads: 'Make sure that you have entered the desired legs variations with accurate ratio values'. 'OK' and 'Close' buttons are at the bottom right.

How to build a custom multi-leg spread

- 1 Go to the panel on the left-hand side. Under View Mode, select **Multi-Leg Spread**.
- 2 Go to Select Spread Type and choose **Custom** from the dropdown menu.
- 3 Add instruments for each leg.
- 4 For each leg, enter a ratio. This can be in either fraction or decimal format.
- 5 Select **OK** at the bottom.



Saving a custom spread

Save your multi-leg spread for easy access in future. To do this, go to the panel on the left-hand side. Under Select Spread Type, select the **save** icon. To view a saved spread, return to Select Spread Type and choose **Saved Spreads** from the dropdown menu. Under Select Spread, select your saved one from the menu.

Predefined spreads

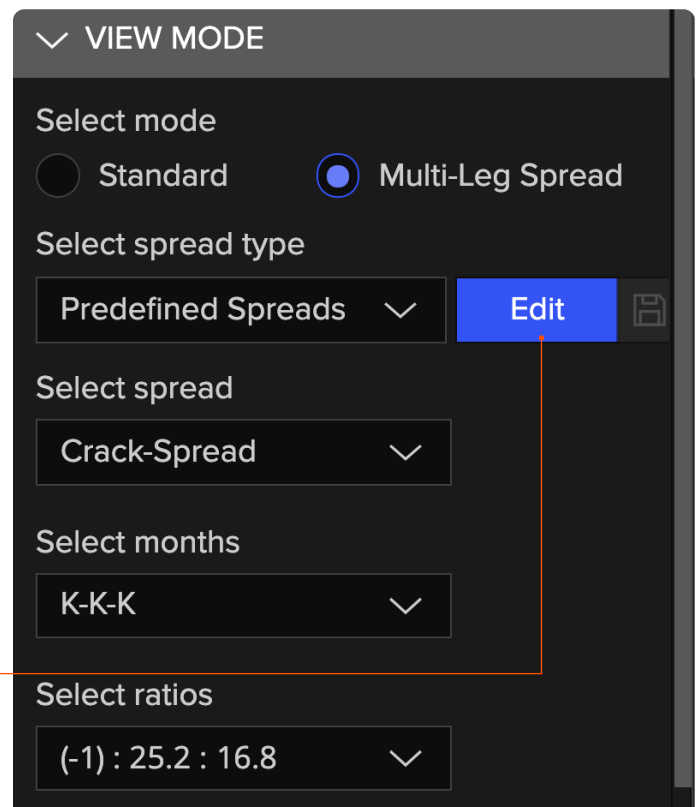
Seasonality Chart offers a range of predefined multi-leg spreads. For example, Cattle-Crush or Crack-Spread.

Predefined spreads automatically show the closest active month combination. They have a default of three legs, but they can be used as a starting point for building custom spreads. When you edit one, it will automatically switch to custom spread mode.

How to open a predefined spread

- 1 Go to the panel on the left-hand side. Under View Modes, select **Multi-Leg Spread**.
- 2 Go to Select Spread Type and choose **Predefined Spreads** from the dropdown menu.
- 3 Under Select Spread, pick a predefined spread from the dropdown menu.
- 4 Using the next two dropdown menus, select the months and ratios.

When this button is highlighted blue, you can edit the spread in the main panel



Spread formula

$\text{Spread}(\text{date}) = \text{Leg1.Price}(\text{date}) * \text{Leg1.Currency}(\text{date}) * \text{Ratio1} + \dots + \text{LegN.Price}(\text{date}) * \text{LegN.Currency}(\text{date}) * \text{RatioN}$

Analysis options

The app has various analysis options that let you focus on the specific data you need.

Choose a field for analysis Once you have selected an instrument you can choose the field for analysis (standard mode only). For example, trade price or turnover.

Historical average Tick this box to show the historical average for your chosen range. You'll see this average as a new line on your chart.

High/low bands This tool shows you the highest and lowest values for your chosen range.

Historical data Tick this box to hide data from all previous years and show only data from the current year. If you do not have the current year selected, the chart will be blank.

Rebase zero Use this tool to switch the chart from absolute to percentage.

How to change the chart interval

Select the dropdown menu on the right-hand side of the Seasonality Chart toolbar and choose your preferred interval. You can set the interval to daily, weekly or monthly. The default interval is daily.

Change chart interval

Views

There are four views available in Seasonality Chart.

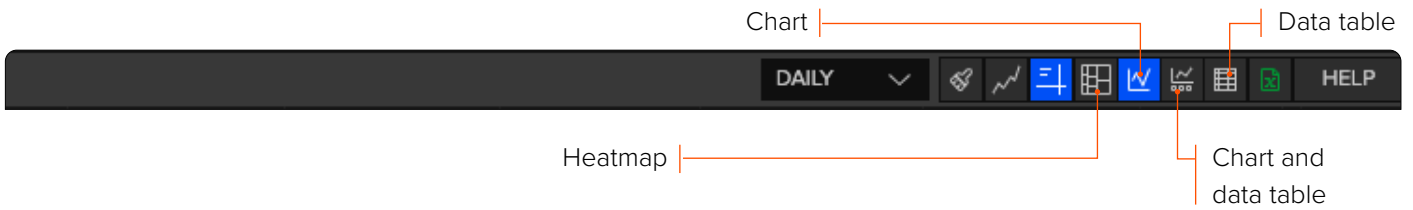


Chart view

This default view shows you a line chart and is the standard way to view data.



Data table view

This view displays the data for your selected years in a table format.

Date	CLM1	CLM0'2	CLM0'1	CLM0'1	CLM0'1
	2021	2020	2019	2018	2017
Close	Close	Close	Close	Close	Close
May 22 (0)			62,9900	72,1300	50,7300
May 21 (0)			63,1000	72,2400	
May 20 (0)		32,5000			50,3300
May 19 (0)		31,8200		71,2800	49,3500
May 17 (0)			62,7600	71,4900	49,0700
May 16 (0)			62,8700	71,4900	48,6600
May 15 (0)		29,4300	62,0200	71,3100	48,8500
May 14 (0)		27,5600	61,7800	70,9600	
May 13 (0)		25,2900	61,0400		
May 12 (0)		25,7800			47,8400
May 11 (0)		24,1400		70,7000	47,8300
May 10 (0)			61,6600	71,9600	47,3300

Heatmap view

Heatmap lets you easily view seasonal changes. There are two modes: month on month or year or year. Holidays and weekends sometimes mean there are no exact previous dates to compare – in this case it will compare the closest dates for which there is data.



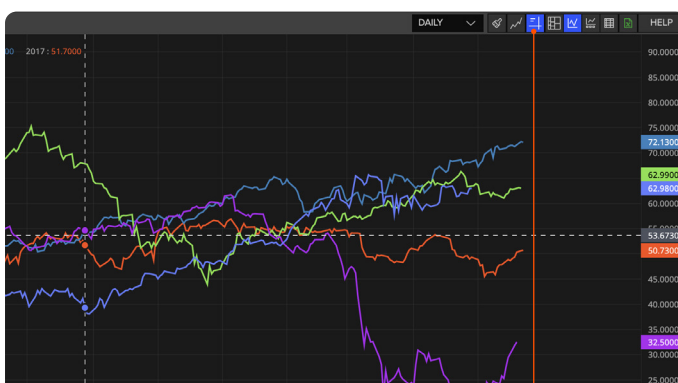
Chart and data table view

This split-window view shows your data as both a chart and a table. The chart is displayed on the top half of the window and the table at the bottom.



Chart settings

The settings in Seasonality Chart let you further customize your experience.



Target cursor icon

Target cursor

The target cursor helps you see where your cursor is positioned along the x- and y-axes. It appears as two dotted lines on your chart. It is turned on by default, but you can choose to hide it.

How to turn on/off the target cursor

Select the **target cursor** icon on the right-hand side of the Seasonality Chart toolbar to toggle it off and on. If the icon is highlighted blue, the target cursor is on.

Decimal precision

You can change the decimal precision for chart data and set it as your default setting. Options range from zero to five decimal points.

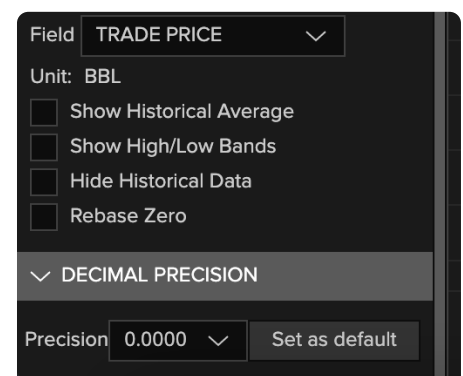
How to change decimal precision

- 1 Go to the panel on the left-hand side.
- 2 Under Decimal Precision, choose your preferred option from the dropdown menu.



Tip

To set a default decimal precision, choose your preferred option then select **Set As Default**.



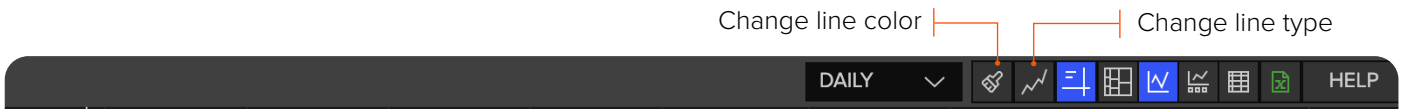
Find the decimal precision setting in the left-hand panel



Customize the chart line

Choose between three different line types: standard line, bars and candles. Bars and candles show additional data: open, high and low values. The default is the standard line.

You can also change the color of the lines.



How to change the line type

Go to the **change line type** icon on the right-hand side of the Seasonality Chart toolbar and select your preferred option from the menu.



If you select bars or candles, you will need to switch back to the standard line to change the field for analysis.

How to change the line color

- 1 Select the **brush** icon on the right-hand side of the Seasonality Chart toolbar.
- 2 Select the color you want to change. You will see the color picker window.
- 3 Choose a color from the options or enter an RGB or hex code. Select **Apply**.
- 4 Repeat steps 2-3 to change more line colors. When you're done, select **OK**.

Need more help?

You can contact us directly through Workspace: select the help icon in the top right corner then go to **Contact Us** and select **Get Help & Support**. Or you can access learning content on the training site: training.refinitiv.com

Refinitiv is one of the world's largest providers of financial markets data and infrastructure, serving over 40,000 institutions in over 190 countries. It provides leading data and insights, trading platforms, and open data and technology platforms that connect a thriving global financial markets community – driving performance in trading, investment, wealth management, regulatory compliance, market data management, enterprise risk and fighting financial crime.

Visit refinitiv.com

 @Refinitiv  Refinitiv

REFINITIV[®]
DATA IS JUST
THE BEGINNING[®] 